



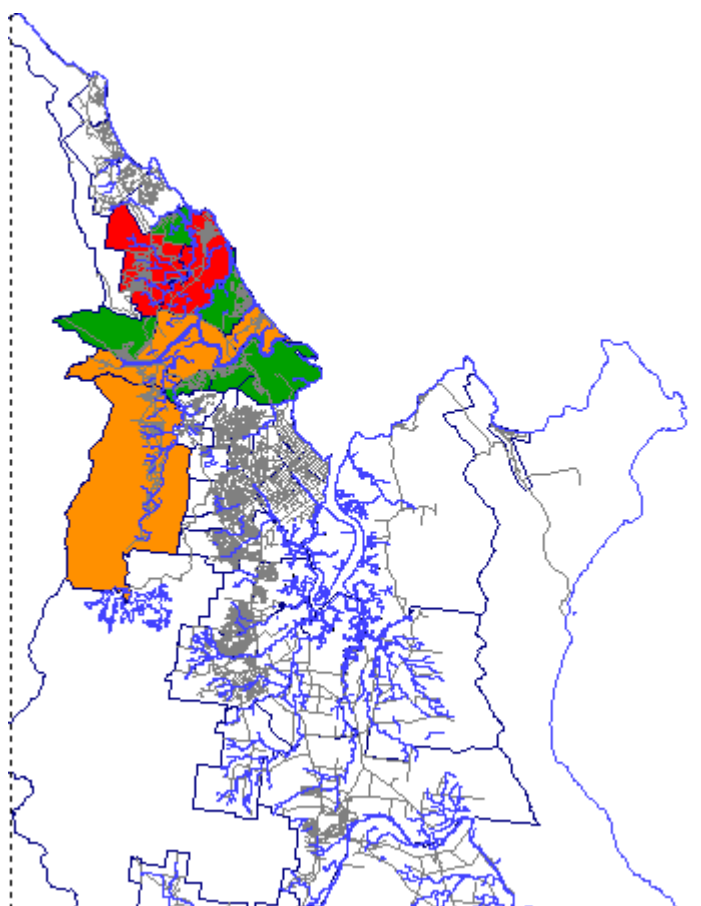
Australian Government

Geoscience Australia



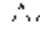





Updated: 14 February 2003

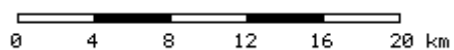
## Cairns Risk Mapping

### Flood Risk



#### Legend

-  Rivers
-  Roads
-  Coastline
-  Suburbs
-  Flood risk - high
-  Flood risk - significant
-  Flood risk - moderate
-  Flood risk - low

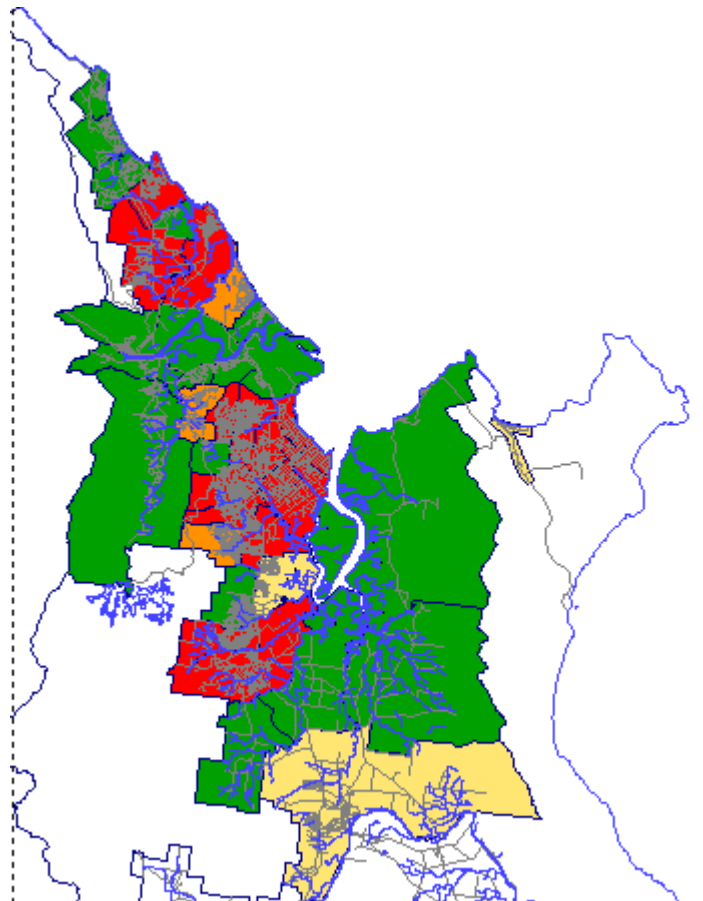


Approximate scale 1:299000



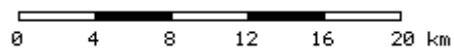
## Cairns Risk Mapping

### Earthquake Risk



#### Legend

- Rivers
- Roads
- Coastline
- Suburbs
- Earthquake risk - high
- Earthquake risk - significant
- Earthquake risk - moderate
- Earthquake risk - low



Approximate scale 1:299000



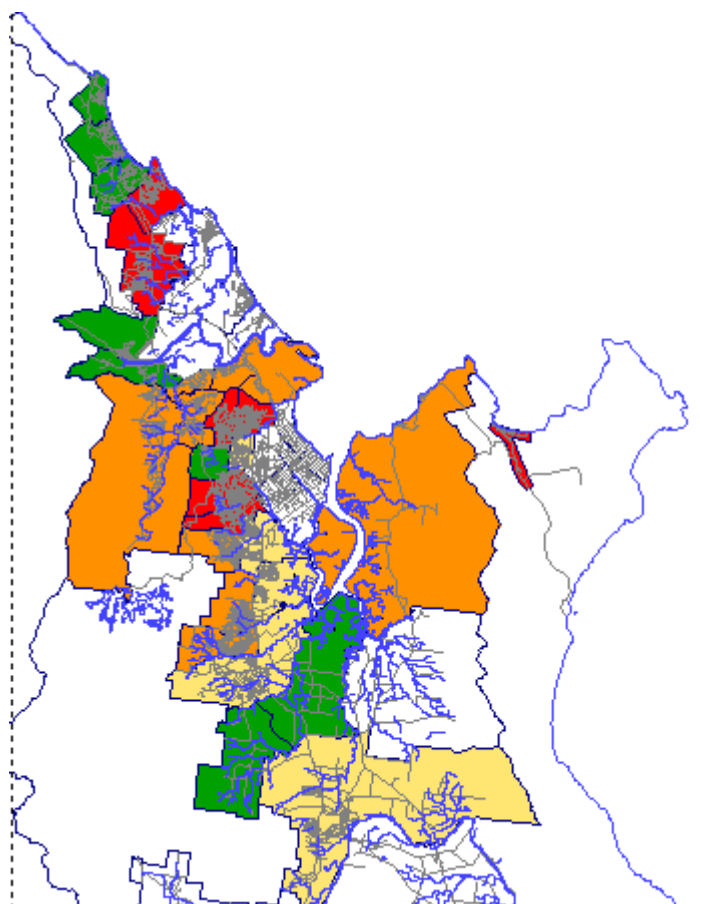
Australian Government

Geoscience Australia



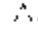





Updated: 14 February 2003

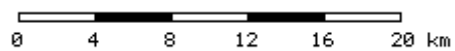
## Cairns Risk Mapping

### Landslide Risk



#### Legend

-  Rivers
-  Roads
-  Coastline
-  Suburbs
-  Landslide risk - high
-  Landslide risk - significant
-  Landslide risk - moderate
-  Landslide risk - low



Approximate scale 1:299000



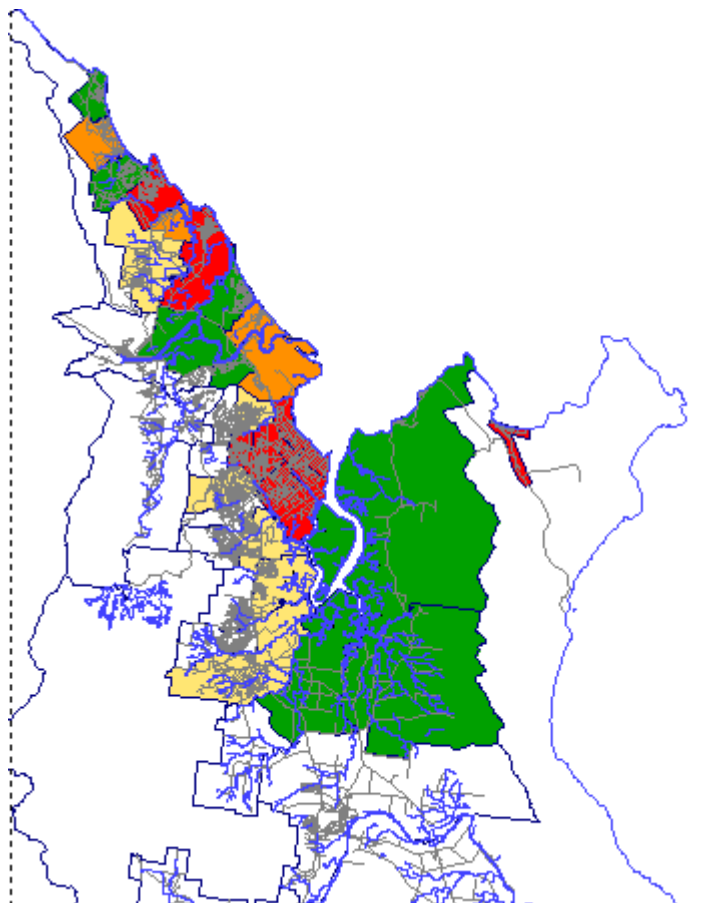
Australian Government

Geoscience Australia



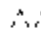





Updated: 14 February 2003

## Cairns Risk Mapping

### Storm Tide Risk



#### Legend

-  Rivers
-  Roads
-  Coastline
-  Suburbs
-  Storm tide risk - high
-  Storm tide risk - significant
-  Storm tide risk - moderate
-  Storm tide risk - low

0 4 8 12 16 20 km

Approximate scale 1:299000



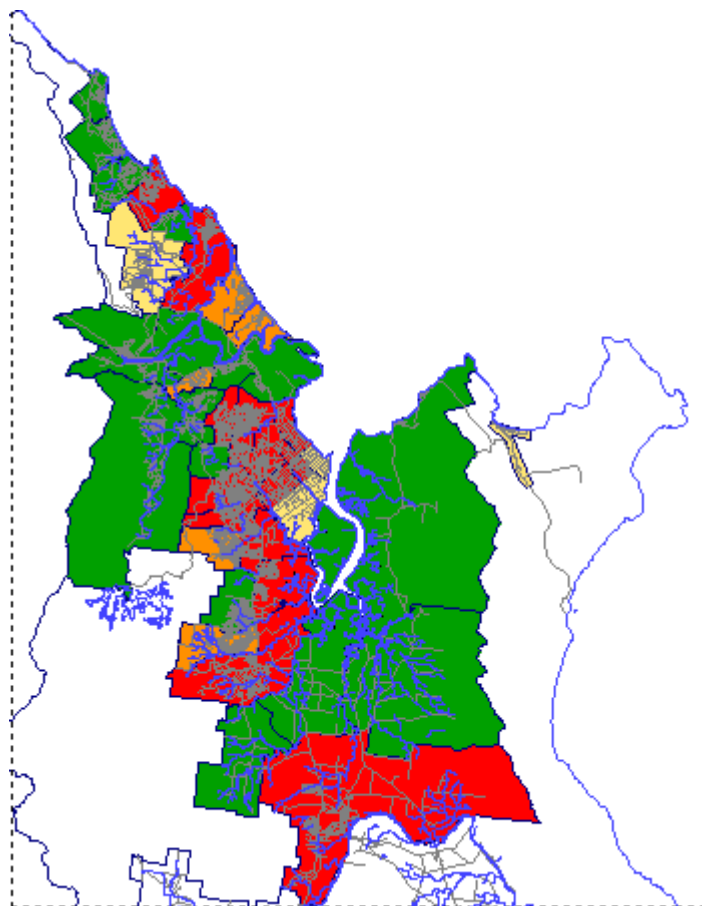
Australian Government

Geoscience Australia



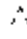





Updated: 14 February 2003

## Cairns Risk Mapping

### Severe Wind Risk



#### Legend

-  Rivers
-  Roads
-  Coastline
-  Suburbs
-  Severe wind risk - high
-  Severe wind risk - significant
-  Severe wind risk - moderate
-  Severe wind risk - low

0 4 8 12 16 20 km

Approximate scale 1:299000



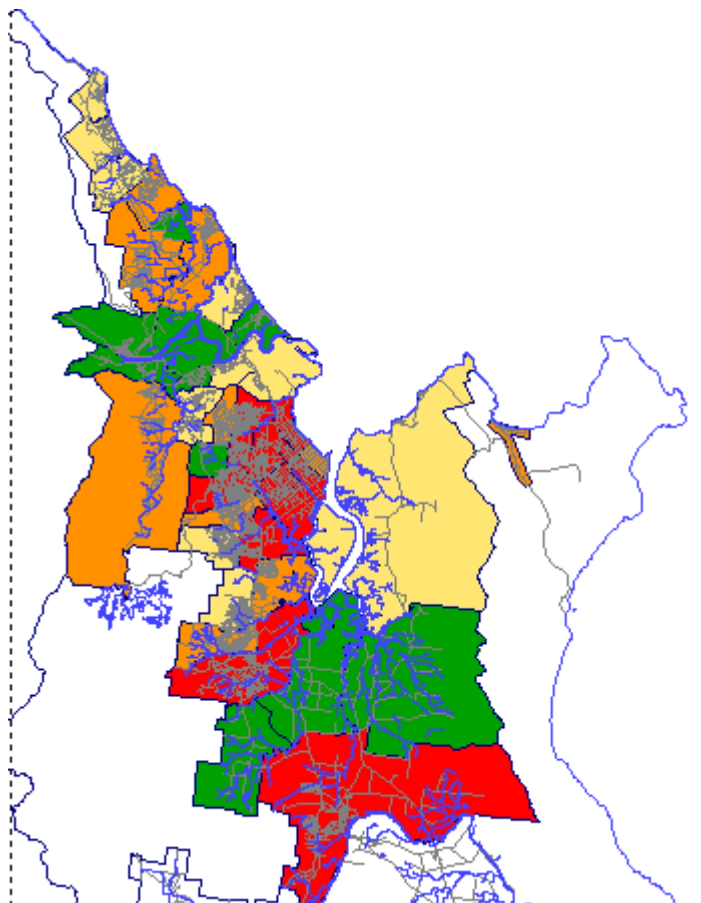
Australian Government

Geoscience Australia



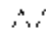





Updated: 14 February 2003

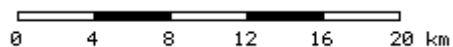
## Cairns Risk Mapping

### Community Vulnerability



#### Legend

-  Rivers
-  Roads
-  Coastline
-  Suburbs
-  Community vulnerability - high
-  Community vulnerability - significant
-  Community vulnerability - moderate
-  Community vulnerability - low



Approximate scale 1:299000